

# Winter COAT DRIVE

ACCEPTING DONATIONS  
AT ALL PUBLIC LIBRARIES  
Nov. 1st 2023 - Jan. 31, 2024

DONATIONS REQUESTED:



NEW OR GENTLY  
USED COATS, JACKETS,  
OR SWEATERS.  
(FOR CHILDREN AND ADULTS)



CORPUS CHRISTI  
PUBLIC LIBRARIES

## Critter Comfort Winter Weather DONATION DRIVE

ACCEPTING DONATIONS  
NOV. 1ST 2023 - JAN. 31ST 2024



DROP OFF DONATIONS AT  
ANY PUBLIC LIBRARY  
OR AT CCACS  
2626 HOLLY RD.  
MON-SAT  
8 - 4 P.M.

### ITEMS NEEDED

- NEW OR GENTLY USED  
BLANKETS, TOWELS, AND SHEETS
- NEW OR UNOPENED TREATS.  
CAN FOOD ONLY. NO DRY FOOD.





# WINTER READING CHALLENGE

DECEMBER 18<sup>TH</sup> - JANUARY 13<sup>TH</sup>  
AGES 0 - 17



READSQUARED APP DOWNLOAD REQUIRED

# **TEEN BOOK FEST** **BY THE BAY**



***Join the Adventure!***

**FEBRUARY 24, 2024**

**9:00 AM - 4:00 PM**

**WWW.TEENSREAD.ORG**

# 1000 Books

Before Kindergarten  
presents a sweet celebration:

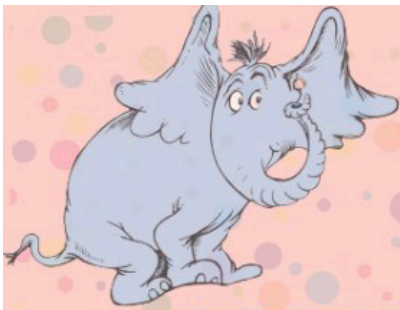
# CANDY LAND

JOURNAL  
REQUIRED  
FOR ENTRY

SATURDAY, DECEMBER 9<sup>TH</sup> FROM 11:00 AM - 12:00 PM



LA RETAMA CENTRAL LIBRARY  
805 COMANCHE ST., (361) 826 - 7000



# YOU'RE INVITED TO: READ ACROSS AMERICA!

**WHO?**

BRING YOUR FAMILY TO  
CELEBRATE DR. SUESS'S  
BIRTHDAY!

**WHEN?**

FEBRUARY 29TH @ 4:30PM

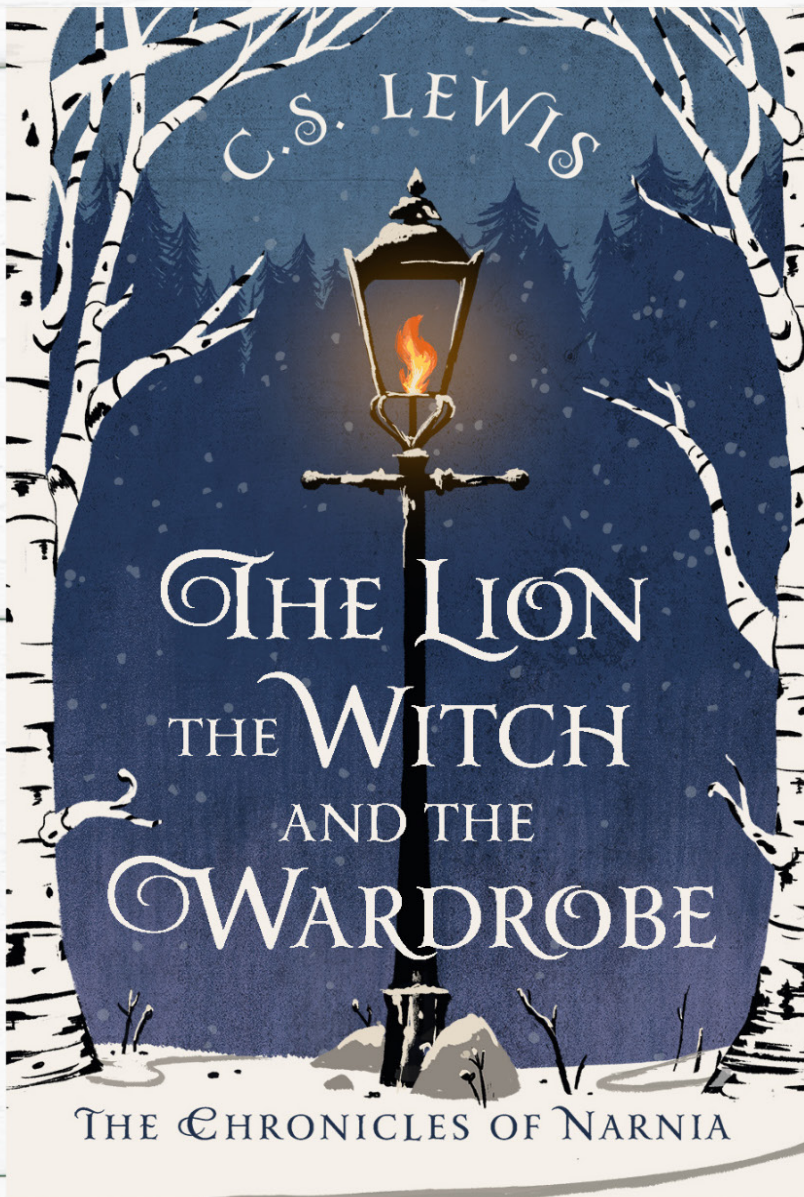
**WHERE?**

NEYLAND LIBRARY  
1230 CARMEL PKWY  
361-826-2370

Persons requiring accommodations should  
contact the library 48 hours in advance.



# Anita & W.T. Neyland Public Library



**DATES AND TIMES ARE SUBJECT TO CHANGE. CHECK  
FACEBOOK.COM/NEYLANDLIBRARY FOR UPDATES.**

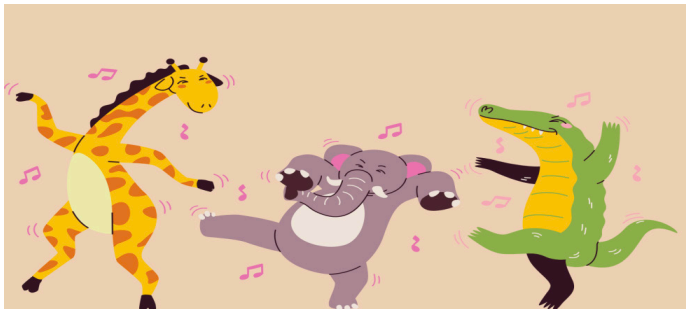
## Just for Tots

### Music + Movement

(Ages 3- 5)

**Mondays & Thursdays @ 10:15 AM**

Music, dance, and rhythm to help the little ones build social and interaction skills.



### Story Time

(Ages 0 - 5)

**Tuesdays & Wednesdays @ 10:15 AM**

Helps children build literacy skills and discover the joy of reading.



### Play Zone

(Ages 0-5)

**Tuesdays & Wednesdays @ 10:35 AM**

Playtime for children still exploring their environment and honing their motor skills.



## For Kids

### Gingerbread Makers

(Ages 6+)

**Thursday, December 14<sup>TH</sup> @ 4:30 PM**

Tis the season! Joins us to create fun gingerbread characters. (paper craft, no cookies involved)



### Nerf War

(Ages 6+)

**Monday, January 22<sup>ND</sup> @ 4:30 PM**

Learn to interact with others and have fun at the same time with our kid favorite nerf war. All toys are provided.



### Love is in the Air

(Ages 6+)

**Thursday, February 8<sup>TH</sup> @ 4:30 PM**

The best gifts are handmade! Try your hand at making some Valentine's Day crafts!



### Birding-Palooza

(Ages 6+)

**Thursday, February 15<sup>TH</sup>**

**@ 4:30 PM**

Come celebrate the amazing world of birds with a craft and a special visitor!



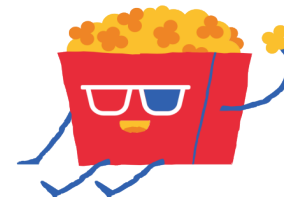
## For Families

### Movie and Crafting

(All Ages)

**@ 4:30 PM**

Join us once a month for a family friendly movie and make a themed craft while enjoying the movie!



**Thursday, December 7<sup>TH</sup>**

How the Grinch Stole Christmas

**Thursday, January, 18<sup>TH</sup>**

Frozen

**Thursday, February 22<sup>ND</sup>**

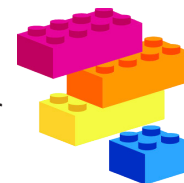
Rio

### Building Block Time

(All Ages)

**Monday, December 11<sup>TH</sup> @ 4:30 PM**

Enhance your child's problem-solving abilities & math skills by being a maker with our blocks.



### Panda Party

(All Ages)

**Monday, January 8<sup>TH</sup> @ 4:30 PM**

Love Pandas? We do too, so join us in celebrating Giant Pandas with a fun craft!



# Neyland

## Pokémon Day

(All Ages)

Tuesday, February 27<sup>TH</sup> @ 4:30 PM

It's National Pokémon Day!

Celebrate with fun Pokémon crafts!



## Game On!

(All Ages)

3<sup>RD</sup> Tuesday of the Month

@ 4:30 PM

Bored? Roll in to play some board games, group games, card games and more.



## For Teens

### Chess Club

(Ages 12+)

Saturdays @ 11:00 AM

Share your skills or learn to play this classic game.

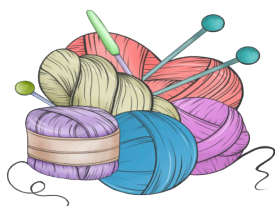


## For Adults

### Hooked on Yarn Club

Thursdays @ 3:00 PM

Join fellow crochet and knitting fanatics and work on your latest projects.



### Taste of Murder Book Club

2<sup>ND</sup> Monday of the Month

@ 10:30 AM

Bring a favorite mystery to share or come hear about ones to read.



### Neyland Literary & Pie Society

2<sup>ND</sup> Tuesday of the Month

@ 4:00 PM

Share titles of books read each month. Sometimes there is pie.



## BANNED BOOK CLUB:

Meeting Every 3rd  
Wednesday of the Month  
@ 4:00 pm!!

### Books to be Discussed:

December 20th:

*Of Mice & Men*

by John Steinbeck

January 17th:

*Adventures of*

*Huckleberry Finn*

by Mark Twain

February 21st:

*Like Water for Chocolate*

by Laura Esquivel



**Virtual Court Kiosk  
Now Available  
@ La Retama  
Central Library**



**What can you do at  
the Virtual Court Kiosk:**

Attend Virtual Court Hearing  
or Meetings with privacy

Apply for Legal Aid Services

Conduct Legal research

Print Legal Documents

**To reserve your spot online**



<https://tinyurl.com/La-Retama-Legal-Kiosk>



**cloudLibrary™**

**1**

**Download the app**

Via the Apple App Store , Google Play,  
or Amazon Fire

E-audiobooks,  
E-books,  
Magazines and  
more.

**2**

**Log in to your Library**

Select your State and Library. Enter ID/PIN

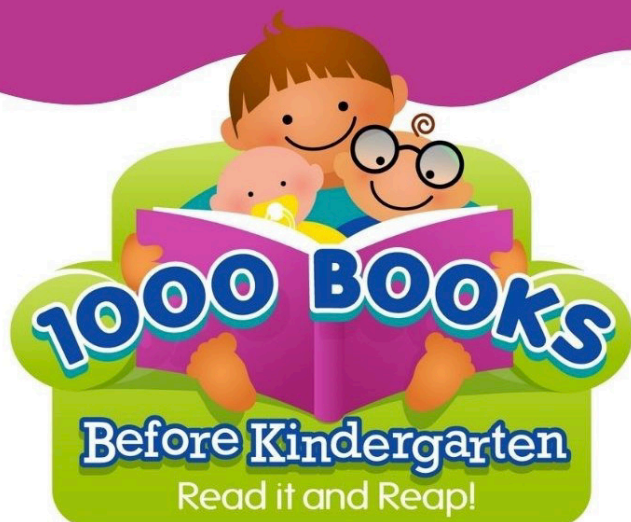
**3**

**Access your account**

Manage borrowed items, reading history,  
holds and more!

**Check out cloudLibrary today.**

# 1000 Books Before Kindergarten



## What is it?

1,000 Books Before Kindergarten is a program for children ages birth to five years old, before they enter kindergarten.

Our goal is for you to read 1,000 books to your child to help them build early literacy skills and a love for reading!

## Sign Up

- 1** Register at any Corpus Christi Public Library location with a library card and receive a hardcover journal.
- 2** Read books to your child and record the titles in your journal. Repeating books is okay.
- 3** Visit your library often! The majority of books recorded should be Corpus Christi Library books.
- 4** Attend quarterly celebrations for 1000 Books Before Kindergarten members to receive milestone rewards at 250, 500, 750, and 1,000 books read!



If you sign your child up for a library card & the 1000 Books Before Kindergarten program, they can get a special library card design! See library for details.

## Local History and Genealogy

Texas and Local History, photograph collections, Genealogy (National and International), and the Hispanic Genealogy Collection.

The Hispanic Genealogy Collection is considered one the most extensive collections on Hispanic genealogy in the state of Texas.

If you have questions about these collections, you can contact CCPL at [localhistory@cctexas.com](mailto:localhistory@cctexas.com)

Located on the second floor of La Retama Library

### Automatic Renewal

*CCPL now offers automatic renewals.*

- Items on hold (requested) for another patron will not renew.
- Renewal of Inter Library Loan item is dependent on lending library
- Flour Bluff ISD Materials will not automatically renew.

### Follow Us! on Social Media



@corpuschristi\_libraries



facebook.com/librariescc



@librariescc



### Authoritative, ad-free, and available 24/7

These e-resources are licensed exclusively to Texas libraries and their patrons. Use TexShare for homework help, health information, business information, academic journals, popular magazines, genealogy, or job and career development.

*All you need is an active CCPL card! Contact the library for details and access.*



# LIBRARY DIGITAL TOOLKIT

## Online Literacy services



TeachingBooks.net  
Biblioboard  
New Book Alerts,  
AuthorCheck, Book Newsletter



## Genealogy/History

Heritage Quest  
Digital Sanborn Maps  
Texas Reference Center



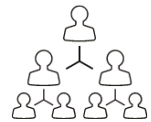
## Career and Job Skills

Learning Express  
Job/Career Accelerator  
Udemy



## Legal/Business

Legal Forms  
Legal Information Center  
Small Business Center



## DIY (Do-It-Yourself)

Chilton Library  
Hobbies/Craft Center  
Home Improvement  
Garden/Horticulture



## Special Interest

### Databases

Birds of North America  
Transparent Language



**FREE ONLINE RESOURCES  
ALL WITH YOUR LIBRARY CARD**

EVERYONE'S INVITED

# FRIENDS OF CORPUS CHRISTI PUBLIC LIBRARIES

Raise funds and volunteer to support  
the libraries & programs.

## Programs:

Family festivals  
Summer Reading Programs  
Teen Bookfest By the Bay  
Children's Special Events

## Volunteer Opportunities:

Librarian projects and programs  
Support library causes  
Promote public awareness of libraries  
Encourage community involvement & donations

805 Comanche Corpus Christi, Tx. 78401

361-826-7060



Friends of the Corpus Christi Public Libraries meet the last Tuesday of the month  
at La Retama Central Library. New Members are always welcome.

For more information please visit [www.cctexas.com/library/friends](http://www.cctexas.com/library/friends)

## For Updates on Facebook!

Dr. Clotilde P. Garcia Public Library

[facebook.com/garcialibrary](https://facebook.com/garcialibrary)

Janet F. Harte Public Library

[facebook.com/hartelibrary](https://facebook.com/hartelibrary)

Owen R. Hopkins Public Library

[facebook.com/owenhopkinslibrary](https://facebook.com/owenhopkinslibrary)

La Retama Central Library (Main)

[facebook.com/librariescc](https://facebook.com/librariescc)

Ben F. McDonald Public Library

[facebook.com/mcdonaldlibrary](https://facebook.com/mcdonaldlibrary)

Anita & W.T. Neyland Public Library

[facebook.com/neylandlibrary](https://facebook.com/neylandlibrary)

# Location

## Anita & W.T. Neyland Public Library

1230 Carmel Pkwy. Corpus Christi, TX 78411  
(361) 826-2370

Mon - Tue: 10 a.m. - 6 p.m.  
Wed - Thu: 10 a.m. - 7 p.m.  
Fri: 10 a.m. - 6 p.m.  
Sat: 10 a.m. - 2 p.m.

## Ben F. McDonald Public Library

4044 Greenwood Dr. Corpus Christi, TX 78416  
(361) 826-2356

Mon - Wed: 10 a.m. - 7 p.m.  
Thu - Fri : 10 a.m. - 6 p.m.  
Sat: 11 a.m. - 3 p.m.

## Dr. Clotilde P. Garcia Public Library

5930 Brockhampton Corpus Christi, TX 78414  
(361) 826-2360

Mon-Fri: 10 a.m. - 8 p.m.  
Sat: 2 p.m. - 6 p.m.

## Janet F. Harte Public Library

2629 Waldron Corpus Christi, TX 78418  
(361) 826-2310

Mon - Fri: 10 a.m. - 7 p.m.  
Sat: 10 a.m. - 2 p.m.

## La Retama Central Library (Main)

805 Comanche Corpus Christi, Texas 78401  
(361) 826-7000

Mon: 2 p.m. - 6 p.m.  
Tue - Wed: 10 a.m. - 6 p.m.  
Thu - Fri: 9 a.m. - 6 p.m.  
Sat: 9 a.m. - 1 p.m.

## Owen R. Hopkins Public Library

3202 McKinzie Rd. Corpus Christi, TX 78410  
(361) 826-2350

Mon - Wed: 9 a.m. - 7 p.m.  
Thu - Fri: 9 a.m. - 6 p.m.  
Sat: 9 a.m. - 1 p.m.



For more information:  
[cctexas.com/library](http://cctexas.com/library)

**Library Closed**  
**Dec. 25<sup>TH</sup> - Jan. 1<sup>ST</sup>**  
**Jan. 15<sup>TH</sup>**



**CORPUS CHRISTI**  
**PUBLIC LIBRARIES**

*Persons requiring an accommodation, contact the library location 48 hours in advance.  
All minors must be accompanied by an adult.*